

## Flexi Float S-70 Segmental Barges

### For Hire

Series S-70 units provide maximum buoyancy and strength within the weight and dimensional limits of permissible truck transport. S-70 assemblies are capable of supporting operating loads of 150 to 300 tons and certain combinations of static and live loading up to 1500 tons. Series S-70 equipment is commonly used in severe applications involving the heaviest track-mounted and mobile cranes, large backhoes and bucket dredges, and deep-well drilling rigs and well servicing equipment.

Series S-70 Modules					
Specifications		Quadrafloat	DuoFloat	End Rake	Loading Ramp
Effective Length	Feet	40	20	10	20
	m2	12.192m2	6.0960m2	3.0480m2	6.0960m2
Effective Width	Feet	10	10	10	10
	m2	3.0480m2	3.0480m2	3.0480m2	3.0480m2
Effective Depth	Feet	7	7	7	7
	M2	2.1336m2	2.1336m2	2.1336m2	2.1336m2
Unit Weight	Tons	17.80	9.45	5.25	7.35
	Kilograms	17800kg	9450kg	5250kg	7350kg
Buoyant Capacity @ 65% Draft	Tons	40.00	20.00	4.50	2.23
	Kilograms	40000kg	20000kg	4500kg	2230kg
Deck Bearing Capacity	Psf	5,000	5,000	5,000	5,000
	Kg per sq. m2	24412.11	24412.11	24412.11	24412.11
Bottom Bearing Capacity	Psf	3,500	3,500	3,500	3,500
	Kg per sq. m2	17088.47	17088.47	17088.47	17088.47
Horizontal Lock Spacing	In.	60	60	60	60
	CM	152.4cm	152.4cm	152.4cm	152.4cm
Vertical Lock Spacing	In.	76.0	76.0	76.0	76.0
	CM	193cm	193cm	193cm	193cm
Lock Capacity @ 65% Yield (Tension or Shear)	Tons	70	70	70	70
	Kilograms	70000kg	70000kg	70000kg	70000kg
Shipping Dimensions					
Overall Length	Feet	40.4	20.4	15.5	20.5
	m2	12.314m2	6.2179m2	4.7244m2	6.2484m2
Overall Width	Feet	10.4	10.4	10.0	10.0
	m2	3.1699m2	3.1699m2	3.0480m2	3.0480m2

Overall Depth	Feet	7.0	7.0	7.0	7.0
	m2	2.1336m2	2.1336m2	2.1336m2	2.1336m2
Cubage	Cu.Ft.	2,947	1,489	1,093	1,423
	Ft2	2212.53ft2	1403.56ft2	1142.13ft2	1361.77ft2

### The Flexifloat Construction System



By Robishaw Engineering is a combination of portable, interlocking modular barges and auxiliary attachments, which are used in inland marine, heavy-construction applications

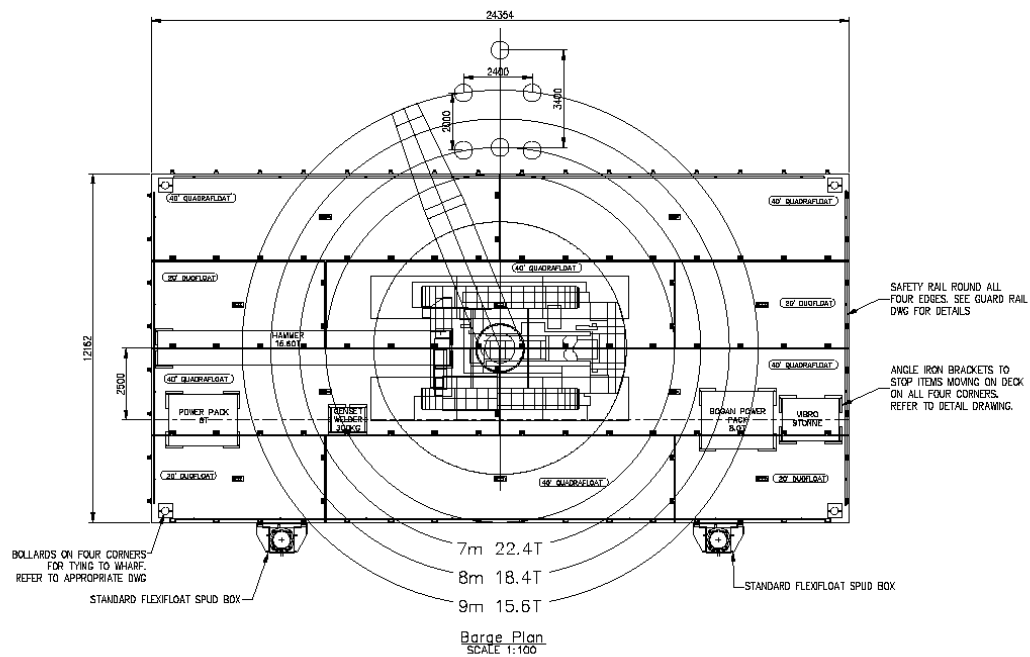
All components of the sectional barge system are portable and are designed for road transport by standard highway trucks and trailers. Flexifloats can be quickly connected into larger assemblies of various sizes and shapes by ordinary work crews without the need for special tools or equipment. The resulting platforms are capable of supporting all types of heavy equipment loads in areas that are practically or economically inaccessible to conventional deck barges.



### Flexifloat Assembly Design

Flexifloat modules are available in various standard widths, lengths and depths to cover overlapping ranges of buoyancy requirements. The integral, high-tensile connector system allows modules to be connected end-to-end, side-to-side, or end-to-side, permitting the assembly of platforms of virtually any size and shape. To insure proper application of the equipment, each Flexifloat assembly is uniquely designed and configured by our engineers to provide the minimum possible draft while maintaining adequate buoyancy and absolute structural integrity under all anticipated environmental and operational load conditions.

Computer analyses and simulations are extensively utilized to verify buoyant capacity, hull stress and static stability for each installation. Whenever possible, assembly designs are enhanced by utilizing "T", "U", "H" or other optimally-shaped configurations that require fewer modules and exhibit better stability characteristics than larger, rectangular assemblies.



	Smith Crane & Construction Ltd 854 Johns Road, Harwood, Christchurch Tel: (03) 358 7738 Fax: (03) 358 7713	Date: 04/04/12 Issue: 001 Project: Barge - Cranes set up Milford Sound	Scale: 1:100 Drawn: PT Checked: 4/04/12 Approved: S00889 Job No: S00889 Drawing No: A Sheet No: 2 Total Sheets: A3
	THIS DRAWING IS COPYRIGHT AND MAY NOT BE REPRODUCED WITHOUT THE WRITTEN PERMISSION OF SMITH CRANE & CONSTRUCTION LTD.	Drawing Title: 7055 lift plan	



**Smith Crane and Construction hire the Flexifloat for the following works:**

- Wharf repairs and maintenance
- Wharf demolition
- New wharf construction
- Wharf dredging
- Mooring and isolated structure replacement or remedials
- Recovery and salvage
- High pressure water jetting
- Fire fighting ability

